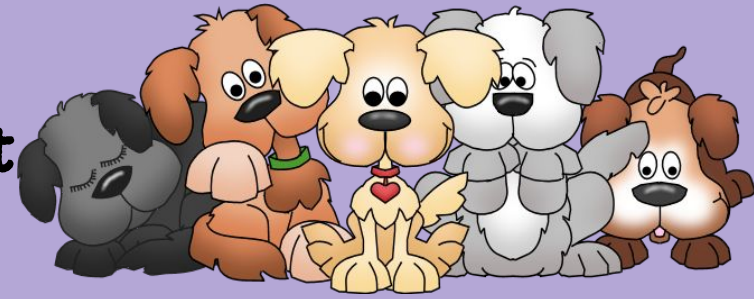




November 27th - December 1st



MATH

- ★ We will continue 2 digit by 2 digit Multiplication!
- ★ We will continue Factors and Multiples.

Vocabulary to Know:

- | | |
|--------------------|------------|
| 1.prime number | 4.factor |
| 2.composite number | 5.multiple |
| 3.GCF | 6.LCM |

Google Apps

- ★ We will finish working on Google Docs.
- ★ We will type Monster Writing.

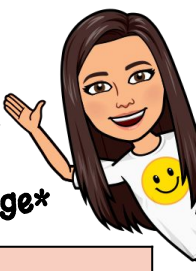
IMPORTANT REMINDERS:

- ★ 12:30 Early Dismissal: November 22nd 🍁
- ★ Thanksgiving Break: November 23rd - 27th 🦃
- ★ Teacher In-Service: November 28th 🖍️
- ★ Return to School - November 29th 🚀
- ★ Please continue to check the Daily Folder and Planner for important information !

Mrs. Wilson's LESSON PLANS

Week of November 27th – December 1st

Lesson Plans are Subject to Change



	MONDAY November 27th	TUESDAY November 28th	WEDNESDAY November 29th 5 B	THURSDAY November 30th 6 C	FRIDAY December 1st 1 A
MATH	NO SCHOOL!	Teacher In-Service	<p>O:TSWBAT</p> <ul style="list-style-type: none"> -Use strategies to multiply 2 digit by 2 digit numbers. -Identify factors and GCF. -Identify multiples and LCM. <p>A:</p> <ul style="list-style-type: none"> ★ Mad Minutes ★ POTD ★ 2 Digit by 2 Digit Multiplication ★ Multiples <p>E: student participation</p>	<p>O:TSWBAT</p> <ul style="list-style-type: none"> -Use strategies to multiply 2 digit by 2 digit numbers. -Identify factors and GCF. -Identify multiples and LCM. <p>A:</p> <ul style="list-style-type: none"> ★ Mad Minutes ★ POTD ★ 2 Digit by 2 Digit Multiplication ★ Multiples <p>E: student participation</p>	<p>O:TSWBAT</p> <ul style="list-style-type: none"> -Use strategies to multiply 2 digit by 2 digit numbers. -Identify factors and GCF. -Identify multiples and LCM. <p>A:</p> <ul style="list-style-type: none"> ★ Mad Minutes ★ POTD ★ 2 Digit by 2 Digit Multiplication ★ LCM <p>E: student participation</p>
Google Apps		NO SCHOOL!	<p>O:TSWBAT gain understanding of Google Apps.</p> <p>A:</p> <ul style="list-style-type: none"> ★ Google Docs <p>E: student participation</p>	<p>O:TSWBAT gain understanding of Google Apps.</p> <p>A:</p> <ul style="list-style-type: none"> ★ Google Docs <p>E: student participation</p>	<p>O:TSWBAT gain understanding of Google Apps.</p> <p>A:</p> <ul style="list-style-type: none"> ★ Google Docs <p>E: student participation</p>

*Lesson Plans meet requirements of the Rockwood Area School District Curriculum & PA State Standards for 4th Grade.

*Accommodations & Modifications included but not limited to: follow IEPs & GIEPS, differentiated instruction, preferential seating, opportunities for intervention or enrichment, & challenge activities at teacher's discretion.